



Title:	1. Winter view towards Crickley Hill from roman villa car park.	HFoV (°)	90	Visualisation type	1	View direction	East
Date, time:	4 February 2020, 13:36	Scale/ Enlargement factor	96% at A1	Projection	Cylindrical	Camera (lens)	Sony A7rIV, FFS (35mm)



Title:	1. Summer view towards Crickley Hill from roman villa car park.	HFoV (°)	90	Visualisation type	1	View direction	East
Date, time:	26 September 2019, 13:47	Scale/ Enlargement factor	96% at A1	Projection	Cylindrical	Camera (lens)	Nikon D610, FFS (Nikon 50mm)



ARUP

Issue	Date	Comment	By	Chkd	Appd
C01	2021-05-20	DCO Application Submission (May 2021)	HS	AK	JP

A3 - Stage Completed

A417 Missing Link Project
Figure 7.10 Photosheets and Visualisations. Sheet 1 of 92
 HE551505-ARP-ELS-X_XX_XXXX_X-VS-LE-000001



Winter baseline photograph



Operation year 1 winter photomontage

Title	1. Year 1 view towards Crickley Hill from roman villa car park.	HFoV (°)	90	Visualisation type	4	Camera (lens)	Sony A7rIV, FFS (35mm)
Date, time	4 February 2020, 13:36	Scale/ Enlargement factor	96% at A1	Projection	Cylindrical	Height of camera lens	1.6m
Coordinates	SO 89884 14599 124.29m AOD	Distance from site boundary	1909m	View direction	70° from N		
To be viewed at comfortable arms length							



ARUP

Issue	Date	Comment	By	Chkd	Appd
C01	2021-05-20	DCO Application Submission (May 2021)	HS	AK	JP

A3 - Stage Completed

A417 Missing Link Project
Figure 7.10 Photosheets and Visualisations. Sheet 2 of 92
 HE551505-ARP-ELS-X_XX_XXXX_X-VS-LE-000001



Winter baseline photograph



Operation year 15 winter photomontage

Title	1. Year 15 view towards Crickley Hill from roman villa car park.	HFoV (°)	90	Visualisation type	4	Camera (lens)	Sony A7rIV, FFS (35mm)
Date, time	4 February 2020, 13:36	Scale/ Enlargement factor	96% at A1	Projection	Cylindrical	Height of camera lens	1.6m
Coordinates	SO 89884 14599 124.29m AOD	Distance from site boundary	1909m	View direction	70° from N		

To be viewed at comfortable arms length

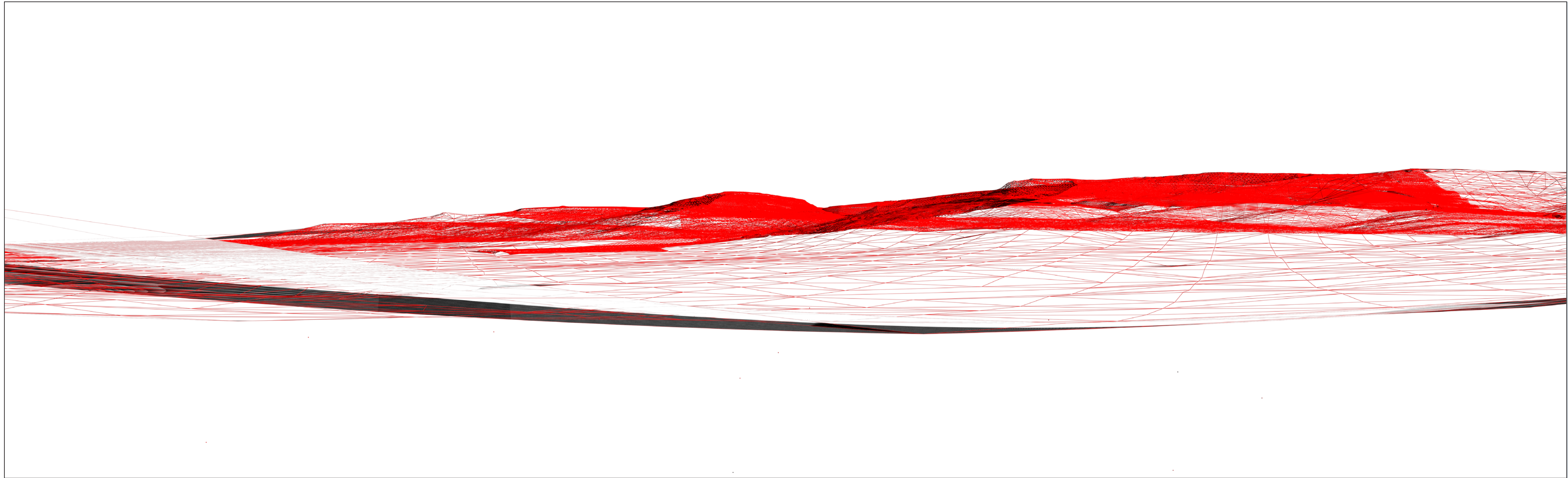


ARUP

Issue	Date	Comment	By	Chkd	Appd
C01	2021-05-20	DCO Application Sub- mission (May 2021)	HS	AK	JP

A3 - Stage Completed

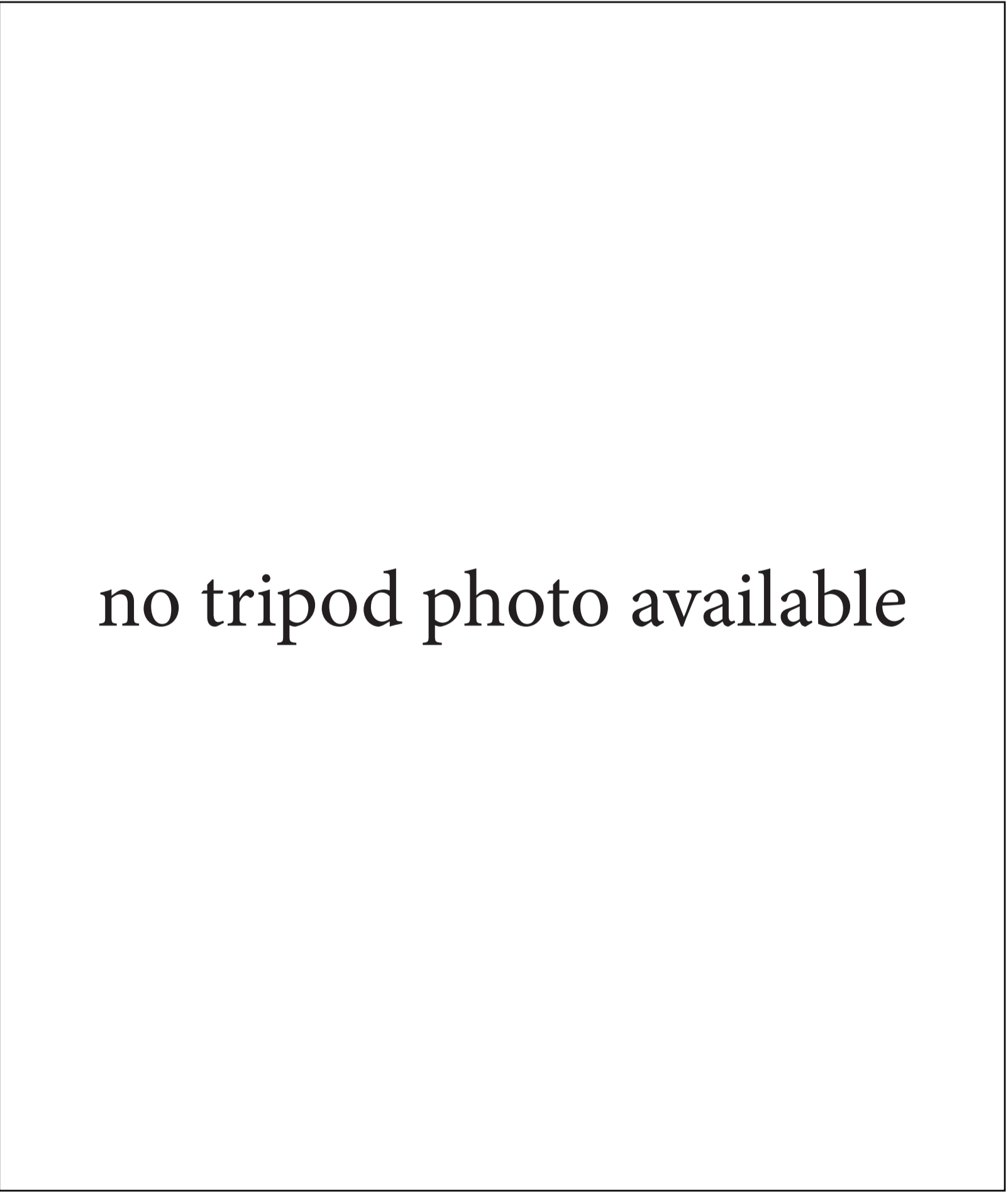
A417 Missing Link Project
Figure 7.10 Photosheets and
Visualisations. Sheet 3 of 92
 HE551505-ARP-ELS-X_XX_XXXX_X-VS-LE-000001



Wireline



Composite image



Tripod location

Title	1. Working view towards Crickley Hill from roman villa car park.	HFoV (°)	90	Visualisation type	4	Camera (lens)	Sony A7rIV, FFS (35mm)
Date, time	4 February 2020, 13:36	Scale/ Enlargement factor	96% at A1	Projection	Cylindrical	Height of camera lens	1.6m
Coordinates	SO 89884 14599 124.29m AOD	Distance from site boundary	1909m	View direction	70° from N		
To be viewed at comfortable arms length							



Issue	Date	Comment	By	Chkd	Appd
C01	2021-02-20	DCO Application Submission (May 2021)	HS	AK	JP

A3 - Stage Completed



Title:	2. Winter view to Crickley Hill from Cotswold Way jcn with PRow on Coopers Hill	HFoV (°)	90	Visualisation type	1	View direction	North East
Date, time:	11 March 2020, 16:15	Scale/ Enlargement factor	96% at A1	Projection	Cylindrical	Camera (lens)	Nikon D610, FFS (Nikon 50mm)



Title:	2. Summer view to Crickley Hill from Cotswold Way jcn with PRow on Coopers Hill	HFoV (°)	90	Visualisation type	1	View direction	North East
Date, time:	26 September 2019, 14:45	Scale/ Enlargement factor	96% at A1	Projection	Cylindrical	Camera (lens)	Nikon D610, FFS (Nikon 50mm)



ARUP

Issue	Date	Comment	By	Chkd	Appd
C01	2021-05-20	DCO Application Submission (May 2021)	HS	AK	JP

A3 - Stage Completed



Title:	3. Winter view to Crickley Hill from properties along access road to roman villa	HFoV (°)	90	Visualisation type	1	View direction	East
Date, time:	25 February 2020, 16:45	Scale/ Enlargement factor	96% at A1	Projection	Cylindrical	Camera (lens)	Nikon D610, FFS (Nikon 50mm)



Title:	3. Summer view to Crickley Hill from properties along access road to roman villa	HFoV (°)	90	Visualisation type	1	View direction	East
Date, time:	26 September 2019, 15:10	Scale/ Enlargement factor	96% at A1	Projection	Cylindrical	Camera (lens)	Nikon D610, FFS (Nikon 50mm)



ARUP

Issue	Date	Comment	By	Chkd	Appd
C01	2021-05-20	DCO Application Submission (May 2021)	HS	AK	JP

A3 - Stage Completed

A417 Missing Link Project
Figure 7.10 Photosheets and Visualisations. Sheet 6 of 92
 HE551505-ARP-ELS-X_XX_XXXX_X-VS-LE-000001



Title:	4. Winter view towards Crickley Hill from A46 Painswick Road	HFoV (°)	90	Visualisation type	1	View direction	North East
Date, time:	11 March 2020, 16:00	Scale/ Enlargement factor	96% at A1	Projection	Cylindrical	Camera (lens)	Nikon D610, FFS (Nikon 50mm)



Title:	4. Summer view towards Crickley Hill from A46 Painswick Road	HFoV (°)	90	Visualisation type	1	View direction	North East
Date, time:	26 September 2019, 15:24	Scale/ Enlargement factor	96% at A1	Projection	Cylindrical	Camera (lens)	Nikon D610, FFS (Nikon 50mm)



ARUP

Issue	Date	Comment	By	Chkd	Appd
C01	2021-05-20	DCO Application Submission (May 2021)	HS	AK	JP

A3 - Stage Completed

A417 Missing Link Project
Figure 7.10 Photosheets and Visualisations. Sheet 7 of 92
 HE551505-ARP-ELS-X_XX_XXXX_X-VS-LE-000001



Title:	5. Winter view towards Crickley Hill from Little Wycombe	HFoV (°)	90	Visualisation type	1	View direction	East
Date, time:	25 February 2019, 17:18	Scale/ Enlargement factor	96% at A1	Projection	Cylindrical	Camera (lens)	Nikon D610, FFS (Nikon 50mm)



Title:	5. Summer view towards Crickley Hill from Little Wycombe	HFoV (°)	90	Visualisation type	1	View direction	East
Date, time:	9 September 2019, 17:18	Scale/ Enlargement factor	96% at A1	Projection	Cylindrical	Camera (lens)	Nikon D610, FFS (Nikon 50mm)



ARUP

Issue	Date	Comment	By	Chkd	Appd
C01	2021-05-20	DCO Application Submission (May 2021)	HS	AK	JP

A3 - Stage Completed



Title:	6. Winter view to Crickley Hill from Old Coach Road overbridge over A417	HFoV (°)	90	Visualisation type	1	View direction	East
Date, time:	11 March 2020, 15:45	Scale/ Enlargement factor	96% at A1	Projection	Cylindrical	Camera (lens)	Nikon D610, FFS (Nikon 50mm)



Title:	6. Summer view to Crickley Hill from Old Coach Road overbridge over A417	HFoV (°)	90	Visualisation type	1	View direction	East
Date, time:	26 September 2019, 15:44	Scale/ Enlargement factor	96% at A1	Projection	Cylindrical	Camera (lens)	Nikon D610, FFS (Nikon 50mm)



ARUP

Issue	Date	Comment	By	Chkd	Appd
C01	2021-05-20	DCO Application Submission (May 2021)	HS	AK	JP

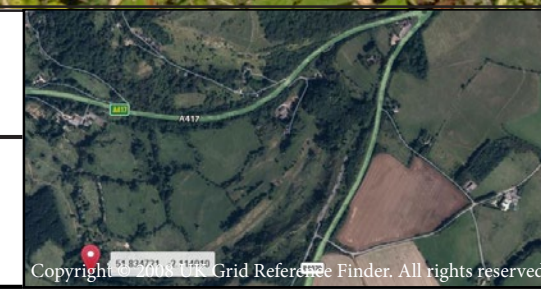
A3 - Stage Completed



Title:	7. Winter view towards Crickley Hill from the Peak	HFoV (°)	90	Visualisation type	1	View direction	North East
Date, time:	25 February 2020, 14:50	Scale/ Enlargement factor	96% at A1	Projection	Cylindrical	Camera (lens)	Nikon D610, FFS (Nikon 50mm)



Title:	7. Summer view towards Crickley Hill from the Peak	HFoV (°)	90	Visualisation type	1	View direction	North East
Date, time:	19 September 2019, 16:23	Scale/ Enlargement factor	96% at A1	Projection	Cylindrical	Camera (lens)	Nikon D610, FFS (Nikon 50mm)



ARUP

Issue	Date	Comment	By	Chkd	Appd
C01	2021-05-20	DCO Application Submission (May 2021)	HS	AK	JP

A3 - Stage Completed

A417 Missing Link Project
Figure 7.10 Photosheets and Visualisations. Sheet 10 of 92
 HE551505-ARP-ELS-X_XX_XXXX_X-VS-LE-000001



Title:	8. Winter view towards Crickley Hill from North of the Peak	HFoV (°)	90	Visualisation type	1	View direction	North
Date, time:	15 January 2020, 12:03	Scale/ Enlargement factor	96% at A1	Projection	Cylindrical	Camera (lens)	Sony A7rIV, FFS (35mm)



Title:	8. Summer view towards Crickley Hill from North of the Peak	HFoV (°)	90	Visualisation type	1	View direction	North
Date, time:	19 September 2019, 16:41	Scale/ Enlargement factor	96% at A1	Projection	Cylindrical	Camera (lens)	Nikon D610, FFS (Nikon 50mm)



ARUP

Issue	Date	Comment	By	Chkd	Appd
C01	2021-05-20	DCO Application Submission (May 2021)	HS	AK	JP

A3 - Stage Completed

A417 Missing Link Project
Figure 7.10 Photosheets and Visualisations. Sheet 11 of 92
 HE551505-ARP-ELS-X_XX_XXXX_X-VS-LE-000001



Winter baseline photograph



Operation year 1 winter photomontage

Title	8. Year 1 view towards Crickley Hill from North of the Peak	HFoV (°)	90	Visualisation type	4	Camera (lens)	Sony A7rIV, FFS (35mm)
Date, time	15 January 2020, 12:03	Scale/ Enlargement factor	96% at A1	Projection	Cylindrical	Height of camera lens	1.6m
Coordinates	SO 92869 15192 275.092m AOD	Distance from site boundary	155m	View direction	320° from N		
To be viewed at comfortable arms length							



ARUP

Issue	Date	Comment	By	Chkd	Appd
C01	2021-05-20	DCO Application Submission (May 2021)	HS	AK	JP

A3 - Stage Completed

A417 Missing Link Project
Figure 7.10 Photosheets and Visualisations. Sheet 12 of 92
 HE551505-ARP-ELS-X_XX_XXXX_X-VS-LE-000001